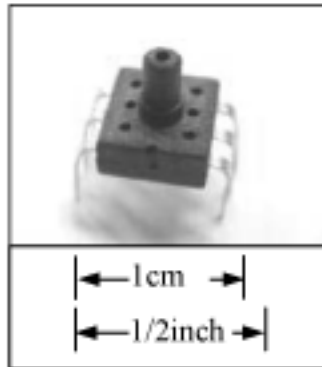


# BPS-pressure sensor



## **FEATURES**

- High reliability
- High Performance
- Small size
- High Impedance for Low Power Applications

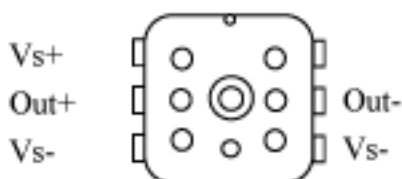
## **APPLICATIONS**

- Medical Equipment
- Blood pressure measurement
- Pneumatic controls

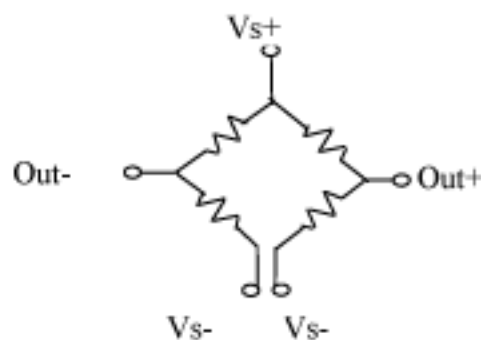
## **GENERAL DESCRIPTION**

This sensor will provide a very cost effective solution of require small size plus performance for pressure application. This sensor give an accurate and stable output over 0°C to 50°C temperature range. It can be measure over 0 psi to 5.8 psi pressure range.

## **ELECTRICAL CONNETION**



## **EQUIVALENT CIRCUIT**



Parameter	Value	Units	Notes
<b>General</b>			
Pressure Range	5.8 / 15 / 30	Psi	
Maximum Overpressure	3X		rated pressure
<b>Electrical @25°C (77°F) unless otherwise specified</b>			
Excitation	1.5mA / 3V / 3V		
Input Impedance	4~6	kΩ	
Output Impedance	4~6	kΩ	
<b>Environmental</b>			
Operating Temperature Range	-20~+60	°C	
Storage Temperature Range	-40~+80	°C	
<b>Mechanical</b>			
Media Compatibility	Clean, dry air & noncorrosive gases		
<b>PERFORMANCE<sup>(1)</sup></b>			
Zero Offset	$\pm 20 / \pm 30 / \pm 30$	mV/V	
Span	$60 \pm 20 / 145 \pm 30 / 60 \pm 20$	mV	
Bridge Resistance	4~6	kΩ	
Linearity	$\pm 0.3$	% Span	
Hysteresis	$\pm 0.2 / \pm 0.1 / \pm 0.1$	% Span	
Temperature Coefficient of Zero Offset	-0.08~+0.08	% Span/°C	
Temperature Coefficient of Span	<-0.15	%Span/°C	
Notes: 1. All values are Minimum/Maximum and are measured at 3VDC and 25°C unless otherwise specified.			
2. Best fit straight line.			
3. Between 0°C and 50°C. Temperature coefficients are typical values.			

